



Model	JCPT2223DC	JCPT2223RTB
<b>Size</b>		
Max. Working Height	22.00m	
Max. Platform Height	20.00m	
Overall Length	4.95m	
Overall Width	2.46m	
Overall Height(Rails Up)	3.86m	
Overall Height(Rails Down)	3.00m	
Platform Size(Length×Width)	4.59×2.25m	
Platform Extension Size	2.70m	
Ground Clearance(Raised/Stowed)	0.40m	
Wheelbase	3.30m	
Turning Radius(Inside/Outside)	1.25m/3.40m	
Tyres	36×14-20	

<b>Performance</b>		
S.W.L	750kg	
S.W.L On Extension	750kg	
Max. Occupants	4	
Gradeability	30%	
Max. Working Slope	2°/3°	
Up/Down Speed	90/100sec	
Travel Speed(Raised)	0.4km/h	
Travel Speed(Stowed)	5.0km/h	4.5km/h

<b>Weight</b>		
Overall Weight	13400kg	13000kg

<b>Power</b>		
Diesel Engine	/	DEUTZ D2.9 L4 36.4kW/2600rpm
Diesel Tank	/	100L
Hydraulic Tank	150L	
Battery	48V/630Ah	/
Charger	48V/60A	/
Driving Motor	4×AC 32V/3.3kW	/
Lifting Motor	2×DC 48V/8.0kW	/

<b>Other Configurations</b>				
4×4 Driving	4×4 Steering	Self-leveling Hydraulic Outriggers	Automatic Unidirectional Extended Platform	Drivable At Full Height

### Self-propelled Rough-Terrain Scissor Lifts(Electric&Engine Large-scale Type)

Model:JCPT2223DC/RTB - JCPT1823RT - JCPT1523RT - JCPT1418DC/RT - JCPT1218DC/RT

The large-scale rough-terrain scissor lifts series can be divided into two categories: electric driving and engine driving. The maximum working height covers 12-22m and the maximum load is 750kg. With advantages of great height, heavy load, large platform and strong power, it can be qualified for more severe working conditions and meet various indoor and outdoor work requirements.

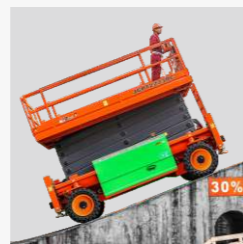
In addition to all the advantages of engine drive types, in view of the pure electric design, the electric drive rough-terrain scissor lift series also takes into account the environmental advantages of noiseless, zero emission and so on. It is suitable for the operation environment with high environmental requirements, such as SGCC, nuclear power plant, SINOPEC, CNPC, residential area, airport, tunnel, etc.



One-key Extended Platform  
(Apply to JCPT2223)



4WD&4WS  
(Apply to JCPT2223/JCPT2212)



Strong Gradeability



Automatic Leveling  
Outriggers